

1772 CHURCH STREET NW

ZONING, PRESERVATION AND DEVELOPMENT COMMITTEE
FEBRUARY 4TH, 2015

PROJECT TEAM:

OWNER

CAS RIEGLER
1501 11TH STREET, NW
WASHINGTON, DC 20001
(202) 215-6588

ST. THOMAS' PARISH EPISCOPAL CHURCH
1772 CHURCH ST, NW
WASHINGTON, DC 20036
(202) 332-0607

ARCHITECT

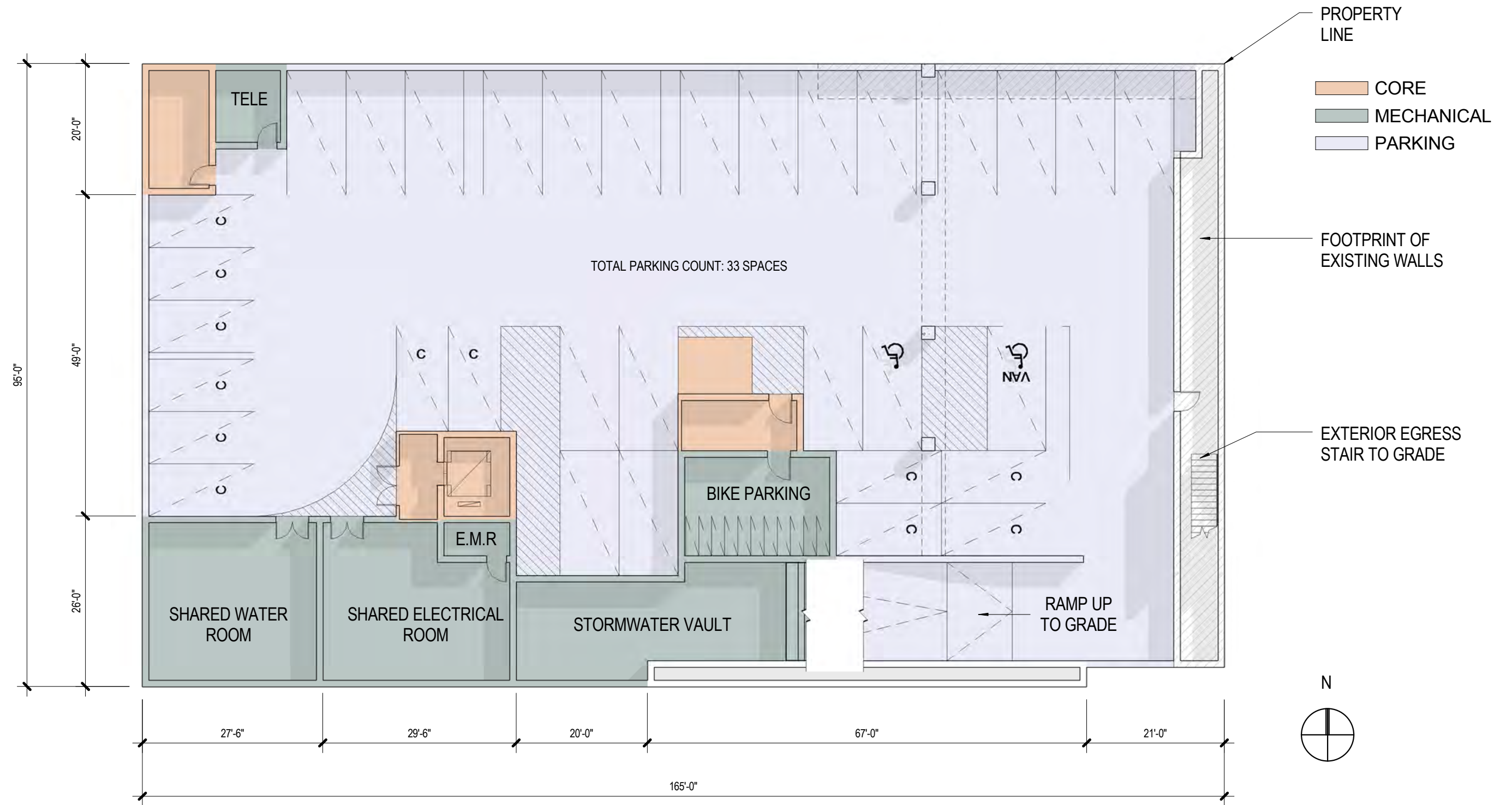
HICKOK COLE ARCHITECTS
1023 31ST STREET, NW
WASHINGTON, DC 20007
(202) 667-9776

BUILDING DATA:

LOCATION: 18TH & CHURCH STREETS, NW
SQUARE/LOT: 0156/0369
ANC: 2B

ZONING DISTRICT: DC/SP-1
OVERLAY: DUPONT CIRCLE OVERLAY





P1 PARKING LEVEL

PLAN

ST. THOMAS' PARISH EPISCOPAL CHURCH

1772 CHURCH ST. NW

2015-02-04

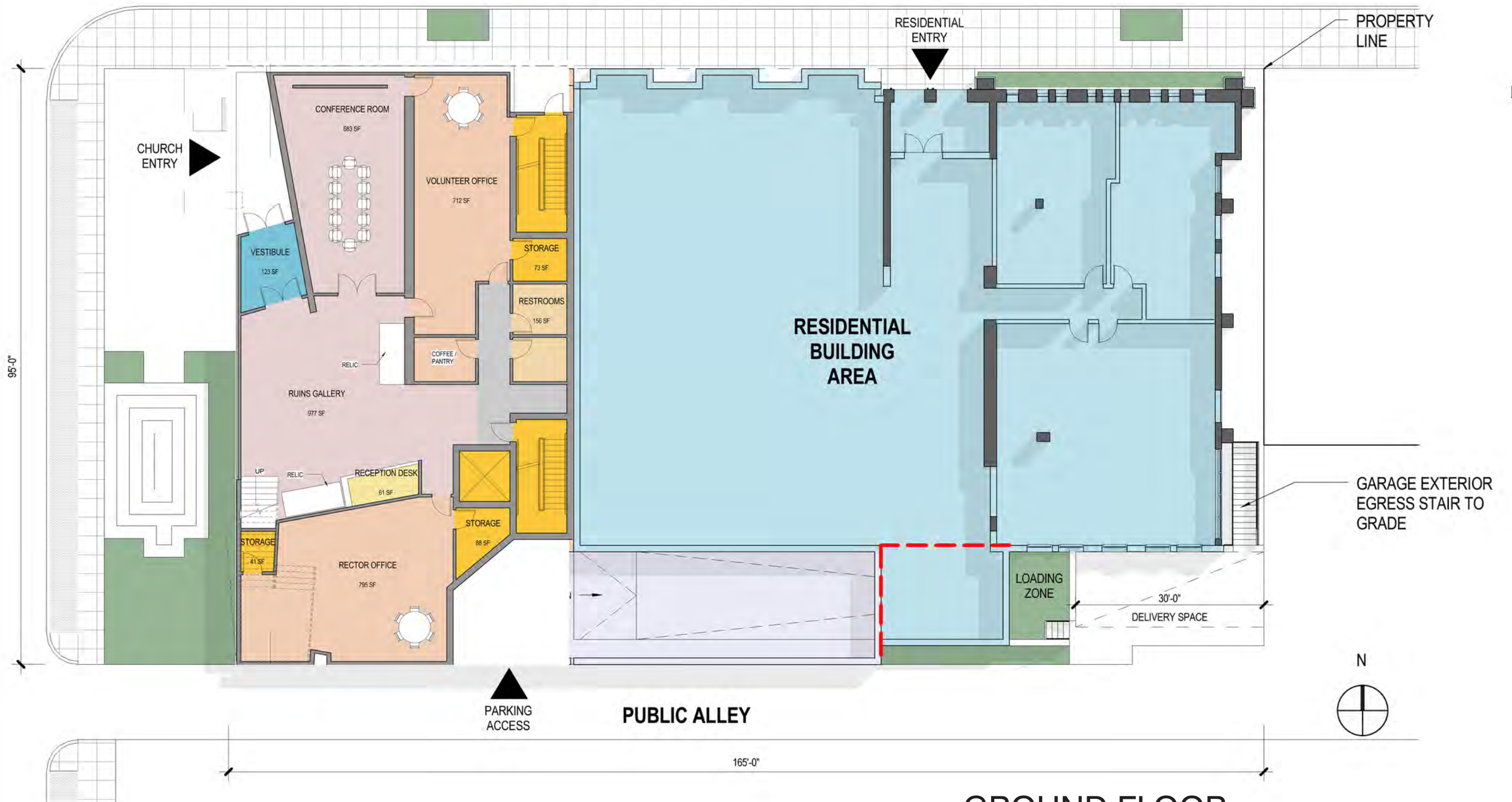
Scale
1/16" = 1'

A-2



CHURCH ST. NW

18th ST. NW



GROUND FLOOR

PLAN

ST. THOMAS' PARISH EPISCOPAL CHURCH

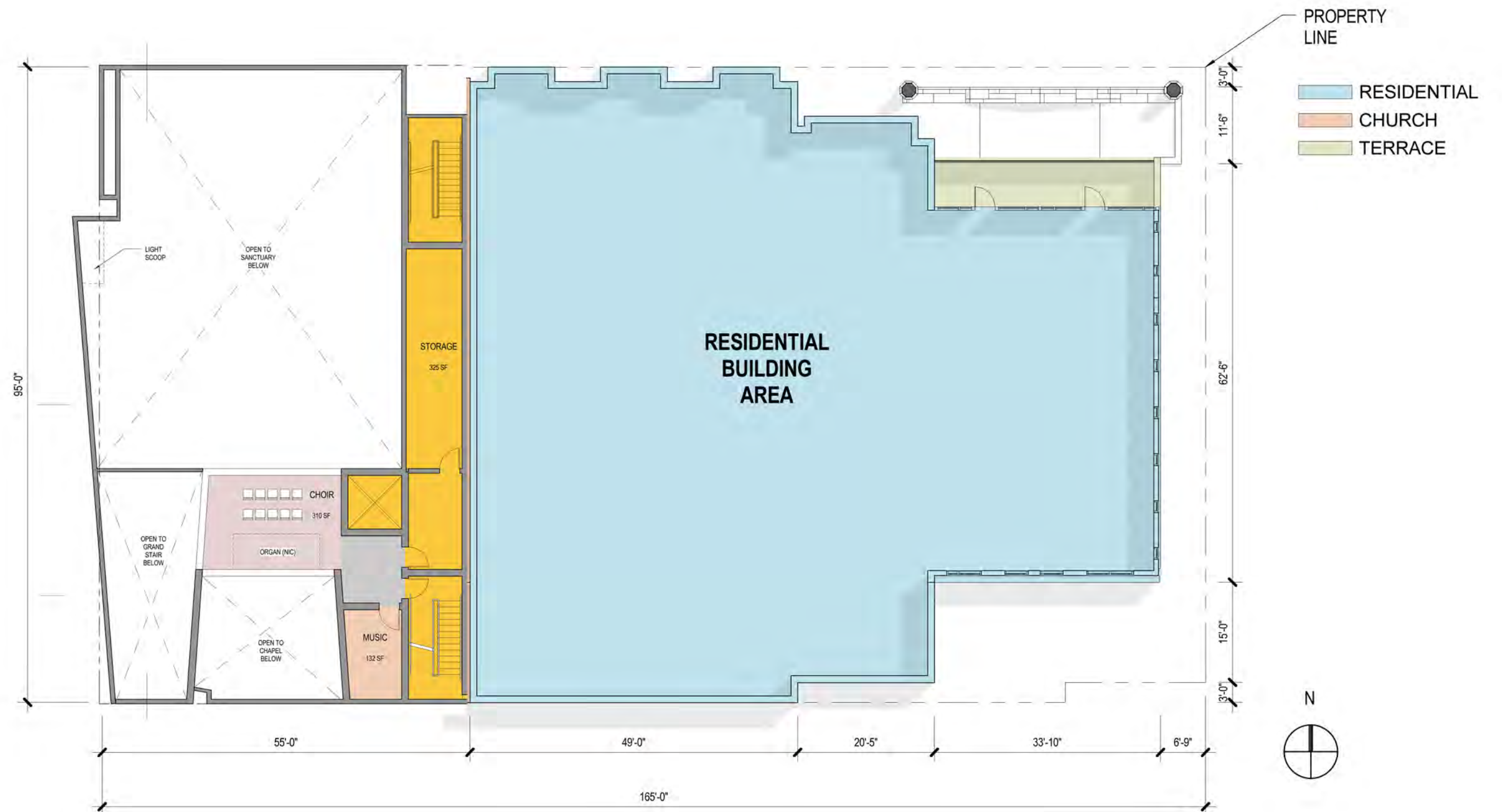
1772 CHURCH ST. NW

2015-02-04

Scale
1/16" = 1'

A-3





CHOIR MEZZANINE

PLAN

ST. THOMAS' PARISH EPISCOPAL CHURCH

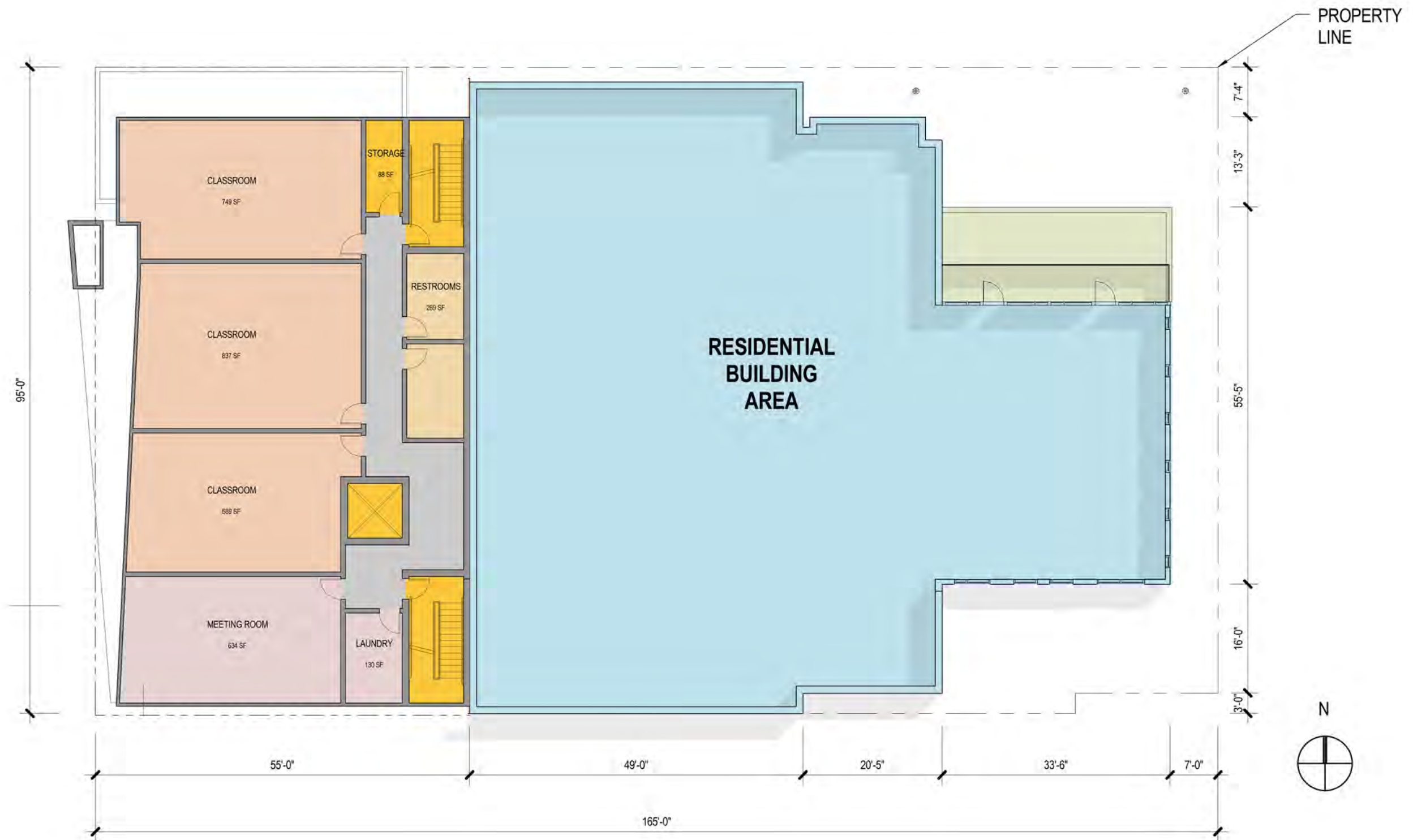
1772 CHURCH ST. NW

2015-02-04

Scale
1/16" = 1'

A-5





3RD FLOOR- CLASSROOM FLOOR PLAN

ST. THOMAS' PARISH EPISCOPAL CHURCH

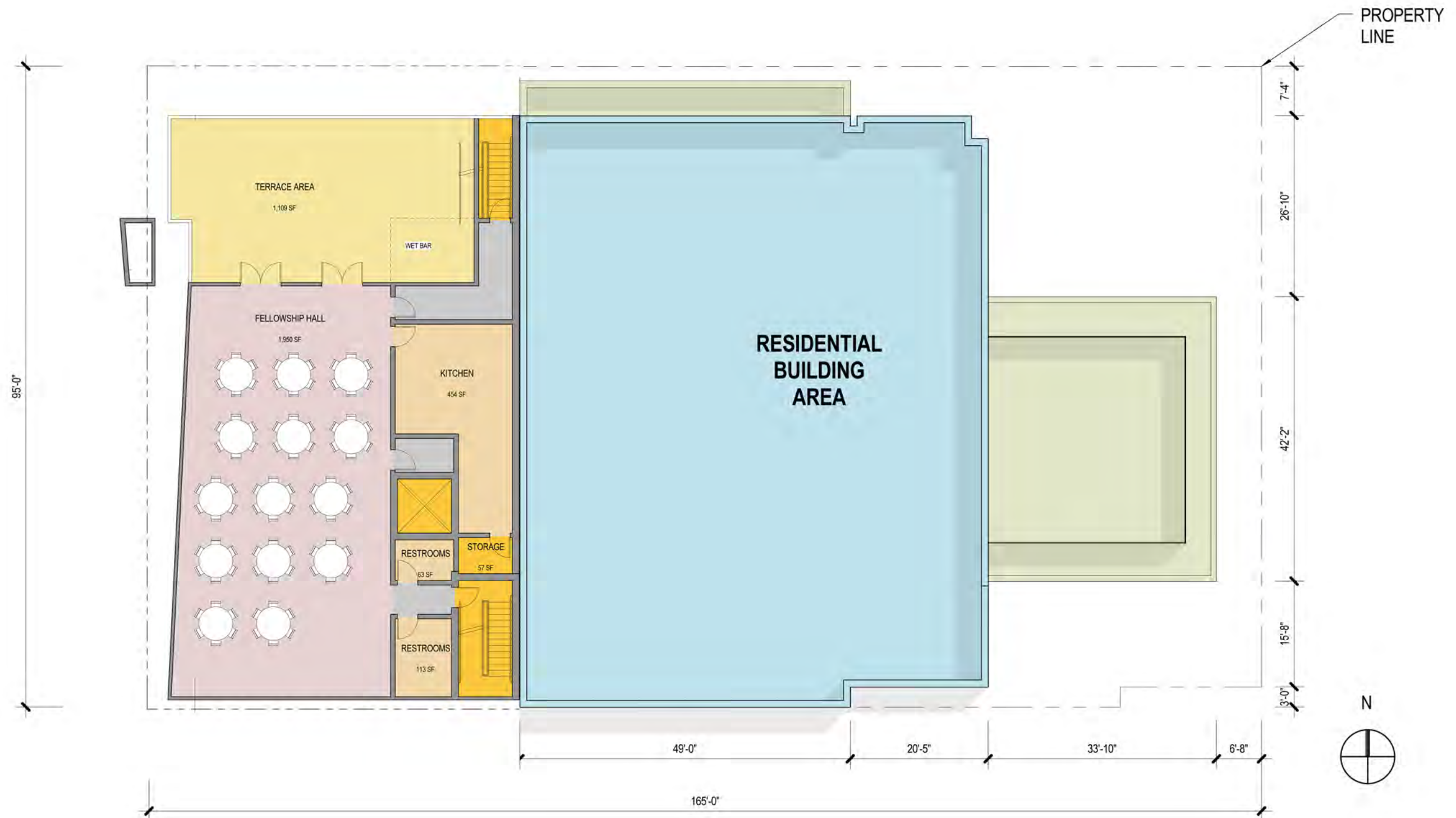
1772 CHURCH ST. NW

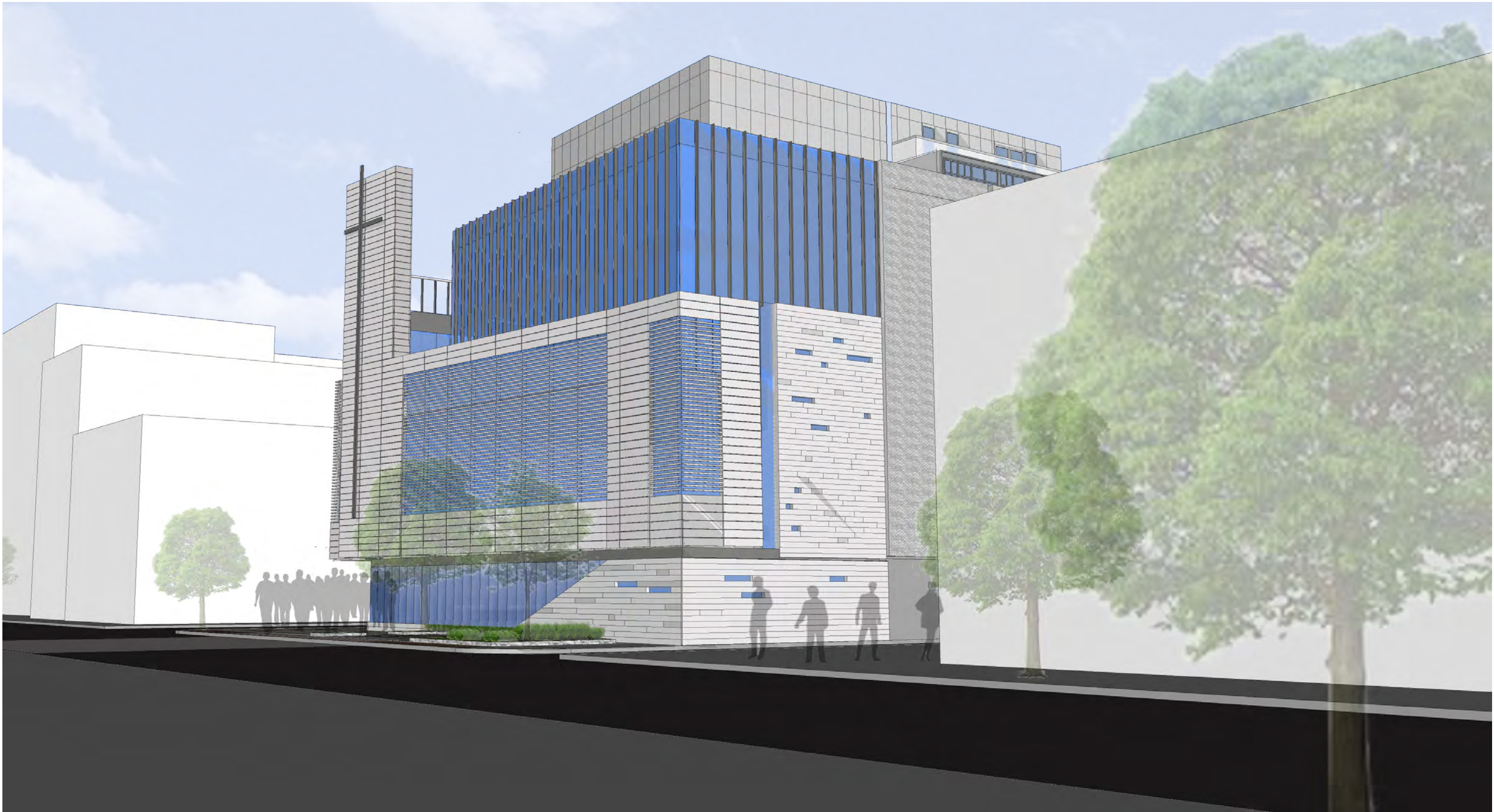
2015-02-04

Scale
1/16" = 1'

A-6







18TH & P STREET

PERSPECTIVE VIEW

ST. THOMAS' PARISH EPISCOPAL CHURCH
1772 CHURCH ST. NW
2015-02-04

A-8





18TH & CHURCH STREET

ST. THOMAS' PARISH EPISCOPAL CHURCH

1772 CHURCH ST. NW
2015-02-04

PERSPECTIVE VIEW

A-9





CHURCH STREET

PERSPECTIVE VIEW

ST. THOMAS' PARISH EPISCOPAL CHURCH

1772 CHURCH ST. NW

2015-02-04

A-10

